



RICHMOND JETS MINOR HOCKEY ASSOCIATION

Safety Guidelines & Game Play Protocols for COVID-19 for the
City of Richmond Arenas and RJMHA

(Last updated – Nov 7th, 2020)

Covid-19 Safety Protocols <https://richmondjetsmha.com/return-to-play-plan/>

- A. **MANDATORY HEALTH SCREENING:** RJMHA uses Teamsnap Health Check for all membership participants entering the facility. If you are not feeling well, stay home and let your manager or coach know. For all visiting associations, please complete your team **Health Check prior to coming to the arena**. Connect with your RJMHA manager on arrival to confirm completion of your Health Check
- B. **ARENA ENTRANCES & EXITS:** Please see RIC facility map (pg 2) and Minoru map (pg 3/4). The arena will have staff to monitor the entrances. **For RIC:** Pond, Coliseum, Forum and Gardens enter through the main RIC entrance. Players are to line up socially distanced in their Rink line outside of the entrance. Players will exit either by Cyclone Taylor or the east door. For all ice times on Garage and Igloo enter through the Igloo entrance. Players will exit either by Cyclone Taylor or the west door. **For Minoru:** Enter via the main entrance for both rinks. Silver Rink Exit is at the southeast corner of the Stadium Rink and Stadium Rink exits are on the east side for visiting teams.
- C. **ENTRY TIME is 15 minutes prior** to the scheduled ice time, and players need to come partially dressed. **No early entry permitted.** You will have **10 minutes to exit** the building.
- D. **CONTACT TRACING:** Please keep track of the participants on your team for the scheduled event. You must be able to produce a copy upon request.
- E. **BASIC SAFETY MEASURES:**
- No mask, no entry and hand sanitize when entering/exiting per the City of Richmond**
 - Skate Guards Minoru:** Standard guards recommended. No roller skate guards due to stairs.
 - After check in, all participants are to hand sanitize prior to entering the rink
 - Masks are reinforced in the change/dressing rooms at all times due to the confined space.
 - As per BC Hockey, all Team Officials and Time & Scorekeepers are required to wear masks at all times within the facility, including the bench and change rooms.
 - We are allowing **Max 22 ROSTERED participants per team only - 1 must be HCSP and max 3 coaches on the bench** (HCSP, players, coaches, manager included in the 22). If capacity is reached then not all team officials will be allowed entry. 1 timekeeper, 1 scorekeeper and 3 refs are the **ONLY** other people permitted for the game. **Max capacity for facility for games = 50**
 - Players must bring their own Pre-filled water bottles, No sharing at ANY time
 - Spitting is strictly PROHIBITED, on and off the ice.
 - Dressing rooms are open, shower facilities are not available.
 - Spectators are not allowed at this time. There is limited viewing available from Stanley's restaurant for the Coliseum and Forum rink. Public washrooms are available at Stanley's.
 - We encourage all participants and families to wear masks and socially distance outside the building at all times, including in the parking lot.

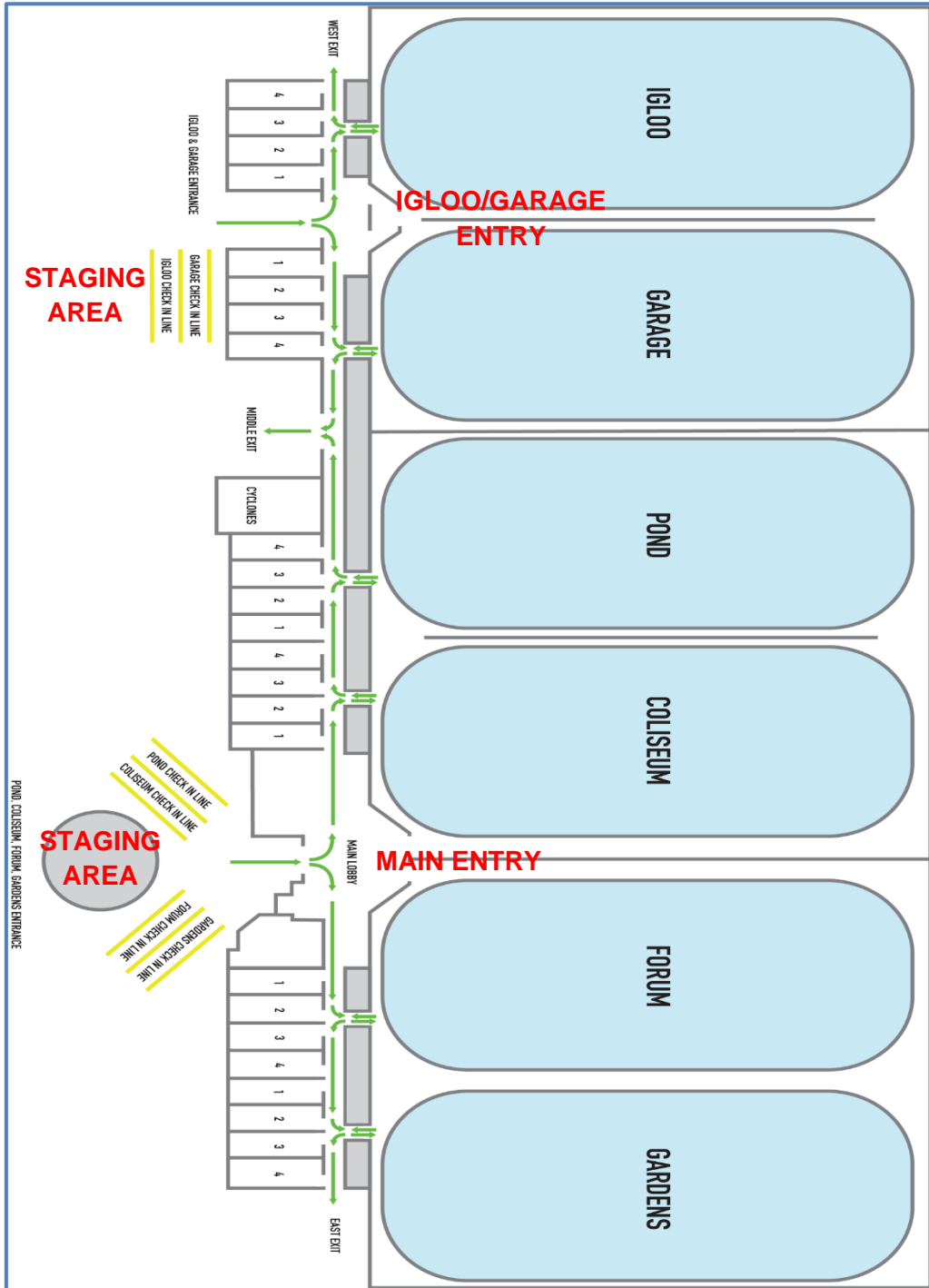
DO NOT COME TO ANY EVENTS IF YOU ARE FEELING UNWELL.

Our Covid-19 Communication Officer is [President, Eric Bernal](#).

Please contact him with any questions or concerns.

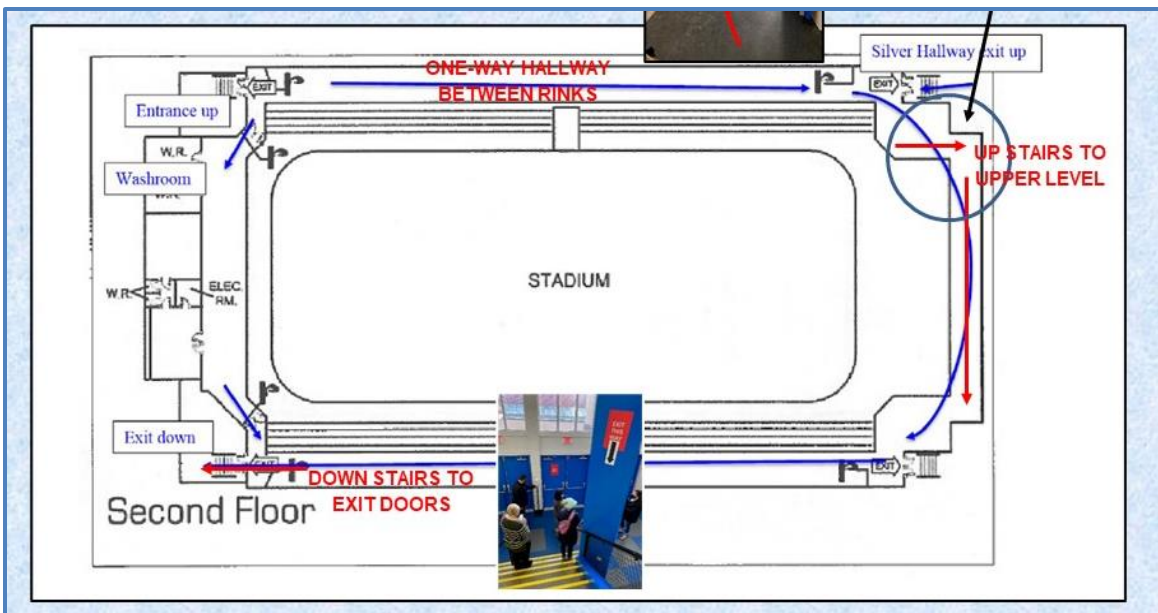
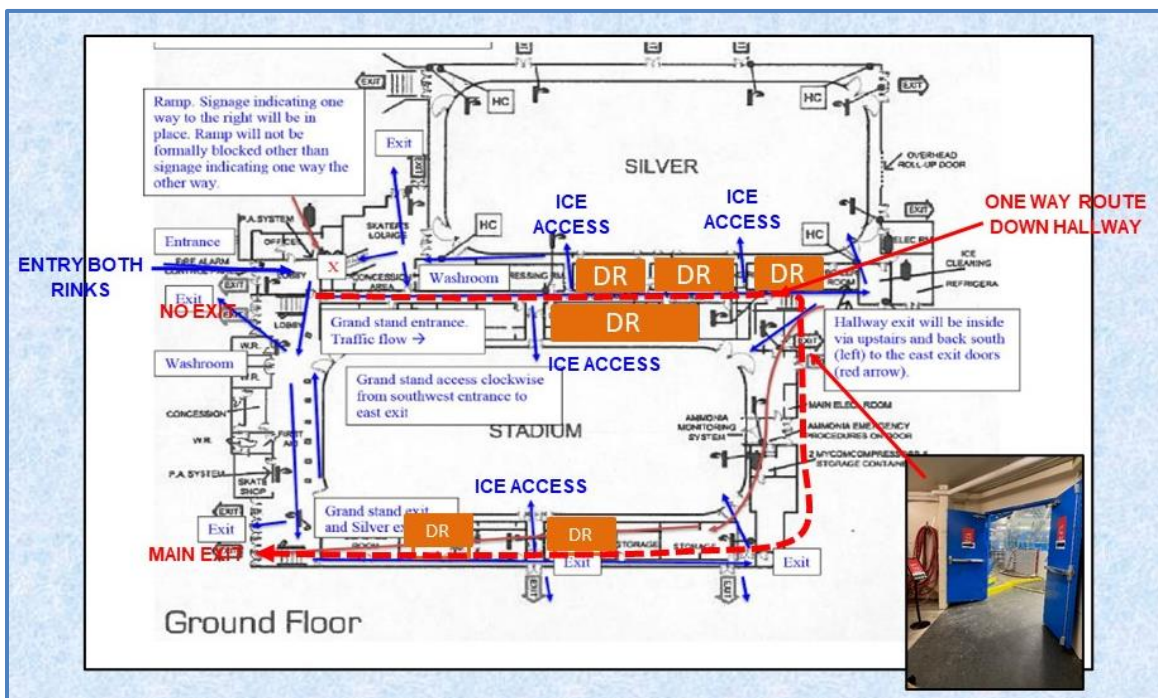


Richmond Ice Centre Facility Map





Minoru Facility Map



DO NOT COME TO ANY EVENTS IF YOU ARE FEELING UNWELL.
Our Covid-19 Communication Officer is [President, Eric Bernal](#).
Please contact him with any questions or concerns.